



www.bradleycollection.com • info@bradleycollection.com

follow us on



the**bradley**collection

lucent

collection

world

The Bradley Collection Ltd • Lion Barn • Maitland Road • Needham Market • Suffolk • IP6 8NS • UK
† +44 (0)1449 722 724 • f +44 (0)1449 722 728

usa & canada

The Bradley Collection Inc. • 3625 Hayden Avenue, #E • Culver City • CA • 90232 • USA
† +1 (310) 815 8255 • f +1 (310) 815 9255

Specialised fixings for mounting brackets will be required in certain situations and are not provided as standard. • Steel items are not recommended for damp conditions such as shower rooms.
Crystal finials and acrylic poles should not be positioned in direct sunlight, and are not suitable for use in conservatories. • Brass items are supplied unlacquered and will tarnish over time.

The Bradley Collection reserves the right to modify design and materials without prior notice as part of a process of continual product improvement.
Due to printing limitations, colours in this brochure may not be accurate.

Products are protected by Design Rights, under provisions of Copyright, Designs & Patents Act 1988.

Bradley®, The Bradley Collection® and  Logo are registered Community trademarks of The Bradley Collection Ltd. in Europe and registered trademarks of the Bradley Collection, Inc. in the USA.

lucent collection

the character of lucent is developed through an interplay of natural and reflected light and via an absence of colour. It is a perfectly neutral, almost transparent companion to dramatic drapes, reflecting rather than creating the drama.

the collection is available in two diameters and acrylic poles are available for straight or bay windows with a passing system to cope with most installations. metal rings are lined for smooth operation.

polished nickel or brushed stainless steel brackets and rings are accompanied by seven finial designs, some incorporating crystal, which are the perfect complement to the solid acrylic pole.

pictured: 50mm (2") acrylic pole • crystal element • polished nickel

in detail

available solid acrylic pole diameters - Ø30mm (1 3/16") • 50mm (2")

- unlimited system length ◊
- easy install, drop-in brackets with magnetic cover plate
- Ø30mm (1 3/16") recommended maximum bracket spacing of 1.2m (4ft)
- Ø50mm (2") recommended maximum bracket spacing of 1.5m (5ft)
- lined metal rings
- passing system
- bespoke bay service (continuous curve not available)



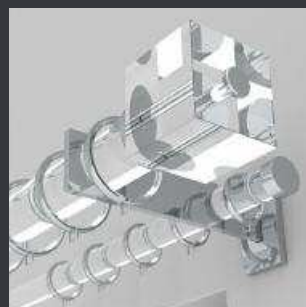
custom bending



passing system



ceiling brackets



double brackets

◊ supplied in sections ✦ poles should not be positioned in direct sunlight, and are not suitable for use in conservatories

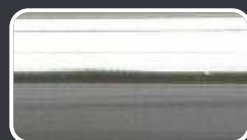
finishes

acrylic poles



clear

metal components



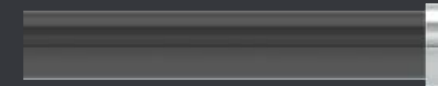
polished nickel[Ⓞ]



brushed stainless

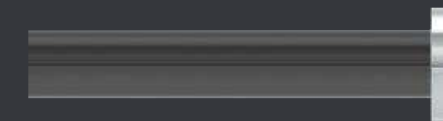
finials

reflective polished nickel and pure crystal partner beautifully with the clear acrylic pole of lucent, while brushed stainless delivers a more understated style.



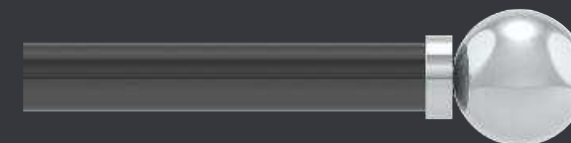
stud

available diameters:
Ø30mm (1 3/16") • 50mm (2")



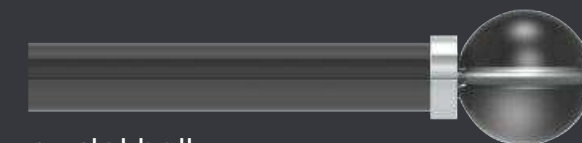
disc

available diameters:
Ø30mm (1 3/16") • 50mm (2")



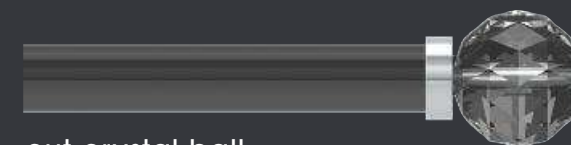
ball

available diameters:
Ø30mm (1 3/16") • 50mm (2")



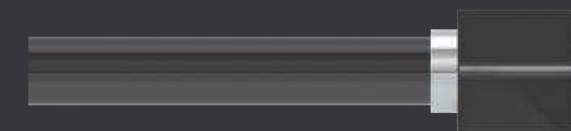
crystal ball

available diameters:
Ø30mm (1 3/16") • 50mm (2")



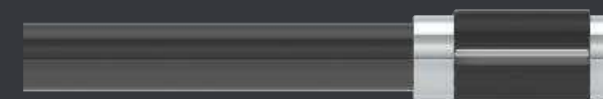
cut crystal ball

available diameters:
Ø30mm (1 3/16") • 50mm (2")



crystal cube

available diameters:
Ø30mm (1 3/16") • 50mm (2")



crystal element

available diameters:
Ø30mm (1 3/16") • 50mm (2")

brackets & rings

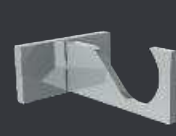
single

side



ø30mm (1 3/16") • 50mm (2") projection to pole centre : 100mm (4")

mid



passing



recess with ring stop



ø30mm (1 3/16") depth off wall : 10mm (3/8")
ø50mm (2") depth off wall : 15mm (9/16")

ceiling brackets

ceiling



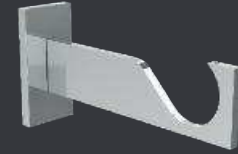
ø30mm (1 3/16") • 50mm (2")
drop to pole centre : 100mm (4")

passing



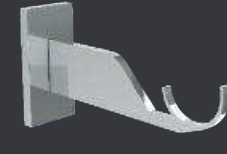
adjustable brackets

side



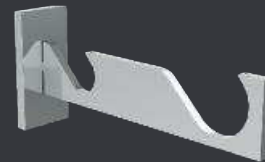
ø30mm (1 3/16") • 50mm (2")
projection to pole centre : min. 100mm (4") max. 170mm (6 11/16")

passing



double brackets

side

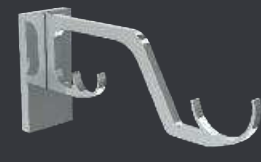


f ø50mm (2") b ø30mm (1 3/16")
projection to front pole centre : 200mm (8") projection to back pole centre : 60mm (2 3/8")

mid



passing



lined ring & passing ring*



ø30mm (1 3/16") • 50mm (2")

accessories

accessories from the stainless & simple collections can be specified if desired

stainless collection page 48 • simple collection page 60



lucent collection

lucent is intrinsically light and airy, making it an ideal carrier for delicate sheers and voiles as well as statement-making feature drapes.

pictured: f50mm (2") - b30mm (1 3/16") acrylic pole
stud • polished nickel