



french collection

a simple yet elegant way to adorn windows, french poles follow the traditional returning curve of antique french hardware.

pictured: 25mm (1") french pole • bronzed
interior design by Shannon Connor Interiors.



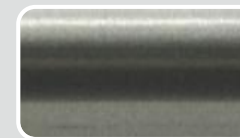
pictured: 25mm (1") steel french pole · waxed

steel french pole

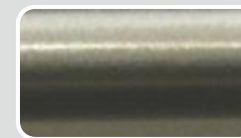
available steel pole diameters - Ø19mm (3/4") • 25mm (1")

unlimited system length◇
 centre bracket available for long runs
 can be used for bay applications

finishes



polished



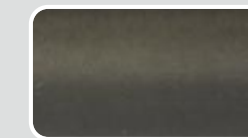
brass toned



bronzed



waxed



oil rubbed

due to printing limitations colours in this brochure may not be accurate • samples are available on request

brackets & rings

single brackets

french



mid



passing



Ø19mm (3/4") • 25mm (1") projection to pole centre : 140mm (5 1/2")

classic ring & passing ring



Ø19mm (3/4") • 25mm (1")

◇ supplied in sections

for minimum projections, technical information, sizes and weights please refer to the specification guide

standard french pole



available steel pole diameters - Ø25mm (1")

unlimited system length
 offset bracket design for fitting close to ceiling.
 centre bracket available for long runs.
 double pole option - f Ø25mm (1") • b Ø19mm (3/4")
 lined ring & passing ring
 can be used for bay applications.



double pole option

pictured: 25mm (1") french pole • brass toned
 pictured right: f25mm (1") b19mm (3/4") french pole • bone

finishes



due to printing limitations colours in this brochure may not be accurate • samples are available on request

+ a handling charge per set will apply ⊕ longer lead-times will apply

brackets & rings

single brackets

french mid passing



Ø25mm (1")
 projection to pole centre : 140mm (5 1/2")

double brackets

french mid passing



f Ø25mm (1") projection to pole centre : 160mm (6 5/16")
 b Ø19mm (3/4") projection to pole centre : 60mm (2 3/8")

lined ring & passing ring



Ø19mm (3/4") • 25mm (1")

for minimum projections, technical information, sizes and weights please refer to the specification guide

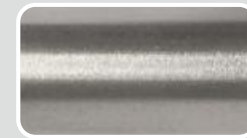


stainless french pole

available stainless steel pole diameters - Ø25mm (1")

- unlimited system length ◊
- offset bracket design for fitting close to ceiling.
- centre bracket available for long runs.
- double pole option - f Ø25mm (1") • b Ø19mm (3/4")
- lined ring & passing ring
- can be used for bay applications.
- can be specified for wet room/outdoor use ♣

finishes



brushed



shot+

due to printing limitations colours in this brochure may not be accurate • samples are available on request

+ a handling charge per order will apply

brackets & rings

single brackets ♣

french mid passing



Ø25mm (1")
projection to pole centre : 140mm (5 1/2")

double brackets ♣

french mid passing



f Ø25mm (1") projection to pole centre : 160mm (6 5/16")
b Ø19mm (3/4") projection to pole centre : 60mm (2 3/8")

lined ring & passing ring ♣



Ø19mm (3/4") • 25mm (1")

pictured: 25mm (1") stainless french pole • brushed stainless steel

◊ supplied in sections

♣ can be specified for wet room/outdoor use

for minimum projections, technical information, sizes and weights please refer to the specification guide